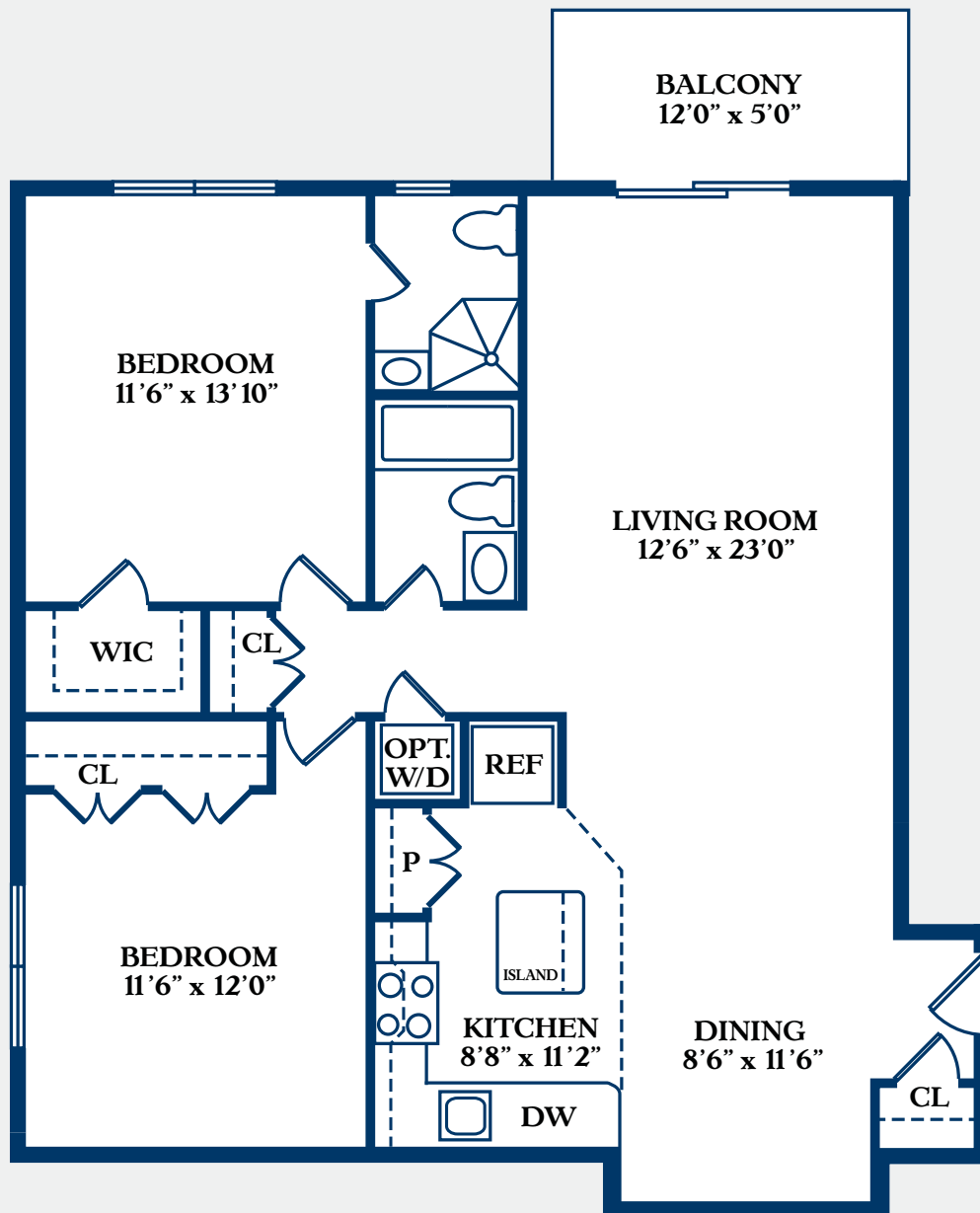


THE IV UNIT

2 BEDROOMS, 2 BATHS, PLUS BALCONY



THE OVERLOOK
AT PIERMONT

All floor plans in these materials are an artist's conceptual drawings and may vary from the actual plans and homes as built. Square footage numbers are approximate and may vary depending on the standard measurement used. Redbrick Partners, LLC reserves the right to make changes to its home designs and to build more or fewer homes than currently planned.